

# St. Peter's Lutheran Church



**In-Person  
Worship**  
SATURDAY @ 5 PM  
SUNDAY @ 8 AM  
SUNDAY @ 10:30 AM

**Live Stream  
Worship**  
Sunday @ 10:30 AM  
[www.Facebook.com/StPetersFW](http://www.Facebook.com/StPetersFW)



## CONNECT to CHRIST WITH US

**November 12-13, 2022**

The Twenty-Third Weekend After Pentecost

*Veterans Day Observance*

Preschool Sing @ 5:00 pm Saturday only

Praise Team Weekend (Sat. 5:00 pm & Sun. 10:30 am)

**Live Stream Worship Sunday at 10:30am:** [www.Facebook.com/StPetersFW](http://www.Facebook.com/StPetersFW)

Large Print bulletins available from an Elder at in-person services.

**New National  
Mental Health  
Emergency  
Phone Number**

**988**

**On-Call Pastor  
260-888-6888**



**Prayer Text Hotline**

Text requests to  
**260-468-5816**



### **Sermon**

"Ironical Rebound"

Text: *Luke 21:5-28 (29-36)*

Pastor Adam McDowell

### **Worship Readings**

Old Testament Reading:

*Malachi 4:1-6*

Epistle Reading:

*2 Thessalonians 3:(1-5) 6-13*

Gospel Reading:

*Luke 21:5-28 (29-36)*



We are so thankful to all Veterans and their service to this country. Be sure to thank them today, and throughout the year. Pray for those who have previously served, who are currently serving, and for those considering this vocation. We love this country and we love you! Thank you for your service.



### **Altar Guild: Thanksgiving Service Display**

Produce to help decorate for our Thanksgiving services would be appreciated, and if appropriate, donated to the food drive after Thanksgiving. Any produce (Apples, pumpkins, veggies, fruits, nuts, etc.) that keep well can be dropped off by 9 a.m. November 23rd in the sacristy room located behind the baptismal font. Thank you for supporting us "Entering His gates with Thanksgiving" together!

**Plan to join us for worship either Thanksgiving Eve service on Wednesday, November 23rd at 7:00 pm or Thanksgiving morning at 9:00 am.**



### **Be a Greeter**

We are looking for people who are willing to join our greeter pool. We have four ladies who call people on our list and ask if they can greet. We do three months at a time. We ask you to come 20-30 minutes before service and greet people as they arrive. We have three doors we cover. When we call, you chose what date or dates you are available to serve. If you would be willing to greet, please contact the caller listed below of the service you attend. This is a wonderful way to meet people or catch up with those you already know.

- Saturday 5:00 pm - Phyllis Aaron 402-1743
- Sunday 8:00 am - Connie Dierks 245-0447
- Sunday 10:30 am - Jan Hoffman 485-0602
- Special Services: Advent, Lent, Summer Monday Nights, & Holidays - Carol Goeglein 442-2870



# Music Ministry

## **Tim's Top 10 Hymn Sing**

Our annual Advent/Christmas Hymn-Sing will be Wednesday, December 7, at 7:00 pm. Tim would like to know YOUR favorites when selecting the hymns for this year's hymn-sing. Take the survey by calling the Church Office to make your requests. Voting will close on Sunday, November 27th. We will sing St. Peter's Top 10 favorite Christmas hymns on December 7!



## **GROW IN HIS GRACE WITH US**

### **Bible Studies**

#### **Sunday Bible Study**

Join us in-person in the Cornerstone Room Sundays at 9:15 AM (treats included) or online through our YouTube channel. Pastor

Nate will lead the study this week and continue with the video series, "This Changed Everything" on the effects of the Reformation.

#### **Tuesday Ladies Bible Study**

Fellowship & study will be every Tuesday in the Large Conference Room from 9:30 - 11:00 am.

#### **Thursday Morning Men's Bible Study**

Every Thursday morning at 6:30 am in the Cornerstone Room.

#### **Pastor Steve's Thursday Noon Bible Study**

The weekly noon Bible Study continues! The study is focused on the book of Revelation.

#### **Tuesday Evening Care Groups**

Join a group focused on dealing in the present with grief or trauma.

- Pastor Nate's trauma support group meets in his office every Tuesday evening at 6 pm. If you'd like to attend or learn more, please call Pastor Nate through the church office or email him at [pastornate@stpetersfw.org](mailto:pastornate@stpetersfw.org) before attending for the first time.
- Michelle Leahy's group called From Mourning to Joy meets in the Ministry Conference Room. Walk-ins are welcome and you can jump into the group at any time. This upcoming week on the 15th ONLY they will meet at 5:00 pm, then will return back to their normal time the following week.

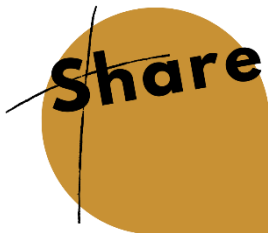


# Senior Saints

## **November Lunch & Learn: Shepherd's House**

Honor and celebrate Veterans Day by joining the Senior Saints THIS Monday, November 14th at 11:30 AM in the Cornerstone Room. We will be featuring a speaker from Shepherd's House. The deadline for lunch has already passed; however, you are welcome to attend even if you choose not to participate in lunch.

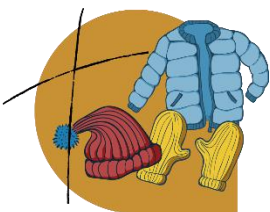
The Shepherd's House was last month's Compassionate Care Collection and caters to our Veterans who need a specific type of support. Honor Flight supports Veterans in a different way. Any Veteran who is attending this month's Lunch N' Learn and has been on an Honor Flight, please come early wearing your Honor Flight hat and/or t-shirt. Mike Buhr will be taking a group photo of you before the Lunch & Learn begins. Please arrive between 11-11:15 am to be included in the photo.



## **SHARE HIM WITH OTHERS**

### **College Student Adoptions**

It's time! For those caring members of the congregation who are passionate about staying connected to our young adult members, come choose your student to adopt. In the Ministry Center are sign-ups. Please be willing to minimally send monthly notes of encouragement to your adoptee. Don't want to do it alone? Have your small group, circle of friends, or bible study adopt a student. Twice a year, we will work together to send a larger care package.



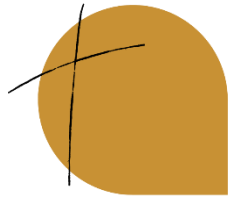
### **Compassionate Care Collection: Carriage House**

The CARRIAGE HOUSE, located on Lake Ave across from the Catholic cemetery, assists adults with serious mental illness to gain or rediscover skills and self-esteem necessary to return to work or school, move into better places, stay out of the hospital and reclaim their lives. The CARRIAGE HOUSE has 2,000 Club Members, most of whom live under the poverty level. As winter approaches they can use adult new or gently used clean jackets and new warm hats and gloves. Collection baskets are in the Ministry Center and North Corridor.



## VBS Collecting Shiny Bits

Looking to get rid of old Christmas decorations? 2023 VBS-Stellar would like to take them off your hands. We are looking for items that are silver or gold. These items could include bulbs, garland, wrapping paper, etc. We will also take any clear twinkle lights and any "snow" material. We look forward to Shining Jesus' Light in June 2023. Keep your calendar open that last week of June!



# Social Ministry

## Thanksgiving Food Drive

It's hard to believe it's that time of year to again think about Thanksgiving and St. Peter's annual Thanksgiving Day Food Drive. In years past the members of St. Peter's have wholeheartedly supported this Social Ministry team effort to help those in need, and we anticipate a similar response this year. Tables will again be set up in the north and west corridor to accept donations of non-perishable food items on Thanksgiving Day.



The Social Ministry team and volunteers will gather on the Friday morning after Thanksgiving at 9:00am to sort, divide, and distribute the food items collected. If you or anyone you know could use this kind of help, please provide the name, address, phone number, and household size to Pastor Ahlersmeyer before November 17. With God's guidance and direction, we will again be able to help families, members and non-members alike, to have a happy Thanksgiving. Praise God!

## LSSI Christmas Thanksgiving Opportunity

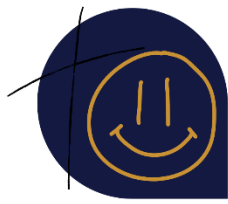
Provide gifts for 4 families for Christmas through LSSI's Adopt-a-Family Program! We are supporting 14 family members--\$100 per family for food and necessities (total 400) and \$50+ per family member for Christmas gifts (total \$700+). The families will be assisted in shopping by an LSSI aide.



Our goal is set at \$1,100, trusting God to motivate our response. Whether your response is \$5 or \$50, you will share the love of Jesus (Bibles will be included in our gifts) with families who may never have experienced His love as the true gift of Christmas. We give thanks to God for this gracious opportunity! May His love overflow! **Ways to Give:** All gifts will be in the form of Walmart Scrip Cards, which can be designated via:

- checks sent to church ear-marked LSSI
- checks or cash in envelopes available in Ministry Center & placed in offering plate or given to the church office.

*All contributions will be converted into St. Peter's SCRIP.*



# Thank You!

## Sponsors

Thank you to our Anonymous Sponsor for taking care of all 3 of these publications for this quarter. A favorite verse of theirs is from Matthew 25:40 "Truly, I say to you, as you did it to one of the least of these my brothers, you did it to me."

- Quarter 4 Portals of Prayer
- Quarter 4 Large Print Portals of Prayer
- Hopeful Living

## Thank Offerings: Lord, I am thankful for...

- My Pastors
- What's in my heart
- Health - Family - Friends
- Jesus, our God - He loves me
- Good doctors
- Forgiveness

## Thank you notes & Shout Outs

I want to thank all who were involved in putting together the new toy bags for church. The new bags alone looked great and the fresh coloring pages and different toys sure made my little one smile! He even found a Lightning McQueen car (his favorite) in his bag today. I love the idea of the tags so next time he can easily find the same bag if he chooses. They look great! - Julie Reidt

Thank you for your generous donation to the Kindness Kitchen at Ronald McDonald House Charities. Our families truly appreciate the comfort of a warm meal while a sick child is in the hospital. - Your friends at RMHS

Dear St. Peter's Church, Thank you so very much for your generous donation given by the Senior Saints luncheon. We average about 100 care packages shipped each week! We could not continue this without friends and partners like you! We so appreciate your continued partnership and support to reach more cancer patients with Hope in Jesus Christ. - In hope, Phil's Friends Team

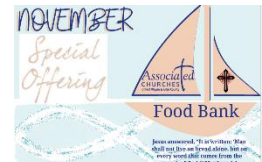


# Stewardship Corner

## TITHES & OFFERINGS

### Stewardship Corner as of 10/30/2022

God certainly gives us what is good; let us return a portion to him!



	Month to Date	Year to Date
Total Giving	\$92,190	\$343,243
Budget	\$98,255	\$349,913
Surplus/(Deficit)	(\$6,065)	(\$6,671)
Loan Balance		\$1,092,163

***Our November Special Offering is going to the Associated Churches Food Bank***

## **LORD'S WEEK AT A GLANCE**

### **Saturday, November 12**

3:30 pm - Praise Team Rehearsal (Sanctuary)  
5:00 pm - Worship w/ Preschool Singing  
6:00 pm - Preschool Family Party (Cornerstone)

### **Sunday, November 13**

8:00 am - Worship  
9:15 am - Adult Bible Study (Cornerstone)  
9:15 am - Public School Confirmation (Large Conference Room)  
9:15 am - Adult Instruction Class: New Members (Ministry Conference Room)  
10:30 am – Worship w/ Praise Team  
5:00 pm - Pickleball (Church Gym)

### **Monday, November 14**

11:30 am - Senior Saints Luncheon (Cornerstone Room)  
7:00 pm - Brass Choir Rehearsal (Sanctuary)

### **Tuesday, November 15**

9:30 am - Tuesday Ladies Bible Study (Large Conference Room)  
5:00 pm - From Mourning to Joy Grief Support (Ministry Conference Room)  
6:00 pm - Trauma Support Group (Pastor Nate's Office)

### **Wednesday, November 16**

6:30 pm - Adult Choir Rehearsal (Cornerstone)

### **Thursday, November 17**

6:30 am - Men's Bible Study (Cornerstone)  
9:00 am - Ladies Aid Quilting (Cornerstone)  
12:00 pm - Pastor Steve's Bible Study (Large Conference Room)  
6:30 pm – Board of Directors Meeting (Large Conference Room)

### **Friday, November 18**

7:00 pm - PTL Father/Daughter Dance (Church Gym)